

# Emergency LED Driver

Split Design | Low Voltage | Gen 3



## OPERATION

When AC power fails, OKT'S EM series emergency LED driver immediately switches to the emergency mode, operating the LEDs at a reduced lumen output for a minimum of 90 minutes. When AC power is restored, the emergency driver automatically returns to the charging mode.

## APPLICATION

Ideally to used inside the LED luminaire (100w max), like LED troffer, linear high bay, tri-proof light, etc.

## CODE-REQUIRED TESTING

More secure, more rigorous than the standard requirements.

### • Initial Self-test after installation

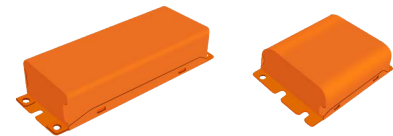
It will perform a functional test in 3 seconds after the driver installed to check the wiring and battery output when work. The indicator LED will be off or flicker in case of a failure or an error.

### • Second Self-Test In 120 Minutes

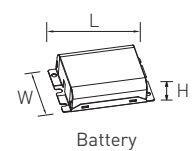
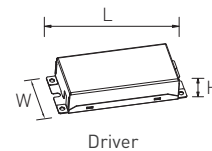
It will perform second test in 120 minutes to check again. Upgrade in Gen 3: Repeat 4 times in every 120 minutes if fail in the second test.

### • Monthly Self-Test

It will automatically perform a test every 30 days with a duration of 3 seconds, in which the wiring and battery output are checked. In case of a failure or an error, the indicator LED will be off or flicker.



## DIMENSIONS



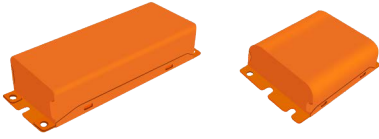
Model		L	W	H
EM-S0854-LBN	Driver	5.08"	2.05"	0.99"
	Battery	3.47"	2.33"	0.97"

# Emergency LED Driver

Split Design | Low Voltage | Gen 3



## SPECIFICATION



### Note:

- It works with LED fixtures for which wiring is accessible to LED module.
- Power of LED fixture  $\geq$  Power of emergency driver.
- LED Driver Output Current: 5A Max

### EM-S0854-LBN

Output Power	8 Watts	Battery	Lithium
Output Voltage	15-54V DC	Recharge	24 Hrs
Input Current	70 mA (Max)	Luminaire Load Power	100W (Max)
Input Power	3.2 Watts (Max)	Dimensions	Driver: L5.08"×W2.05"×H0.99", Battery: L3.47"×W2.33"×H0.97"
Input Voltage	100-277VAC, 50-60Hz	Certificate	UL , CEC
Emergency Operation	$\geq$ 90 Minutes	Output Class	UL LELV (Output protection self-resetting)
Standby Power	<0.4W		
Operating Temp	0°C to 50°C		

## WIRING DIAGRAM

